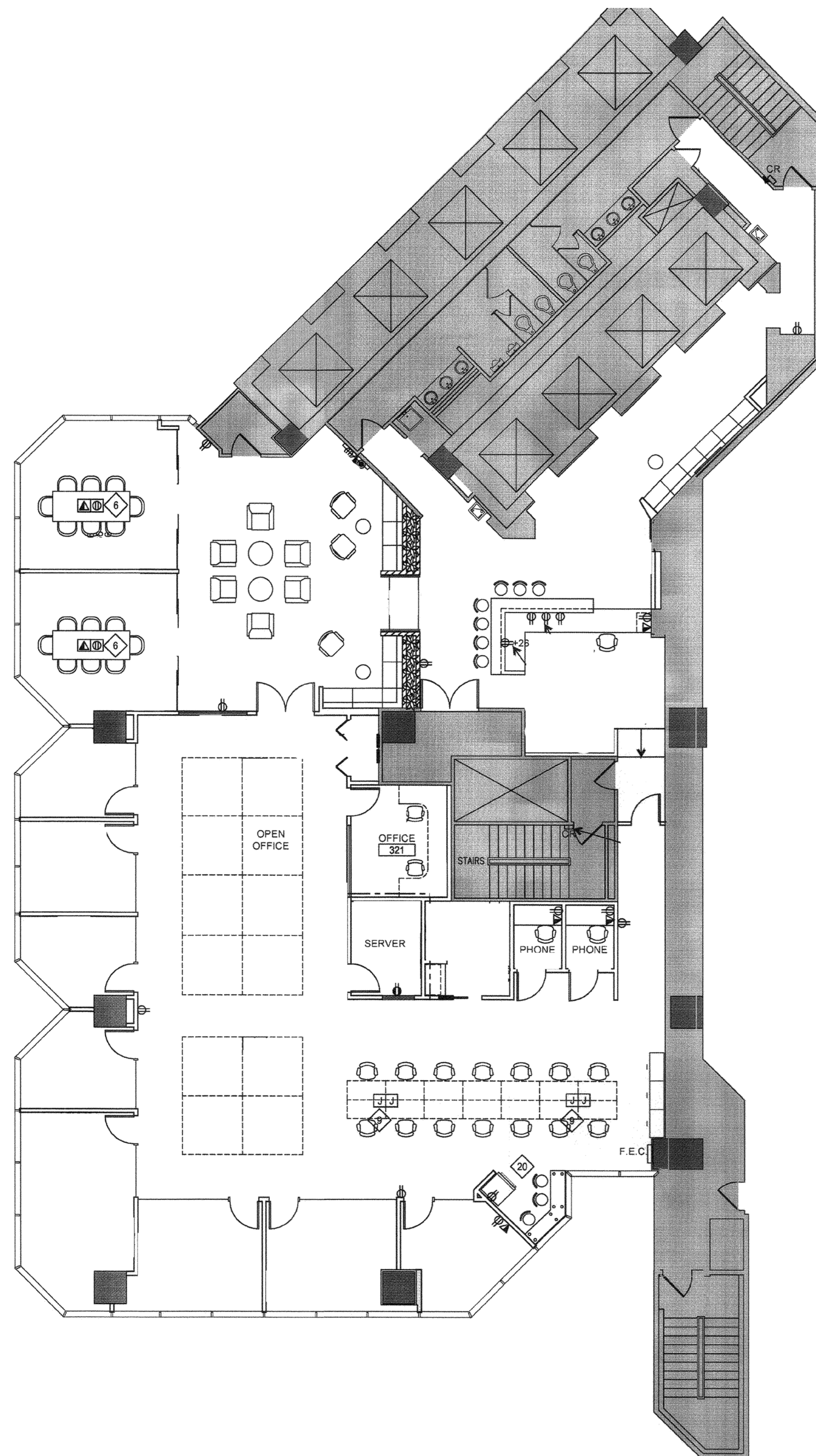


1221 BRICKELL



FOR LEASE

Brickell Avenue's most prominent office landmark.

Suite 300 7,643 r.s.f.

Leasing contacts:

ERIC GROFFMAN

+1 786 390 7497

eric.groffman@cbre.com

JOSH GIBBONS

+1 305 788 9627

joshua.gibbons@cbre.com

EMILY BRAIS

+1 305 733 4092

emily.brais@cbre.com

1221brickellave.com

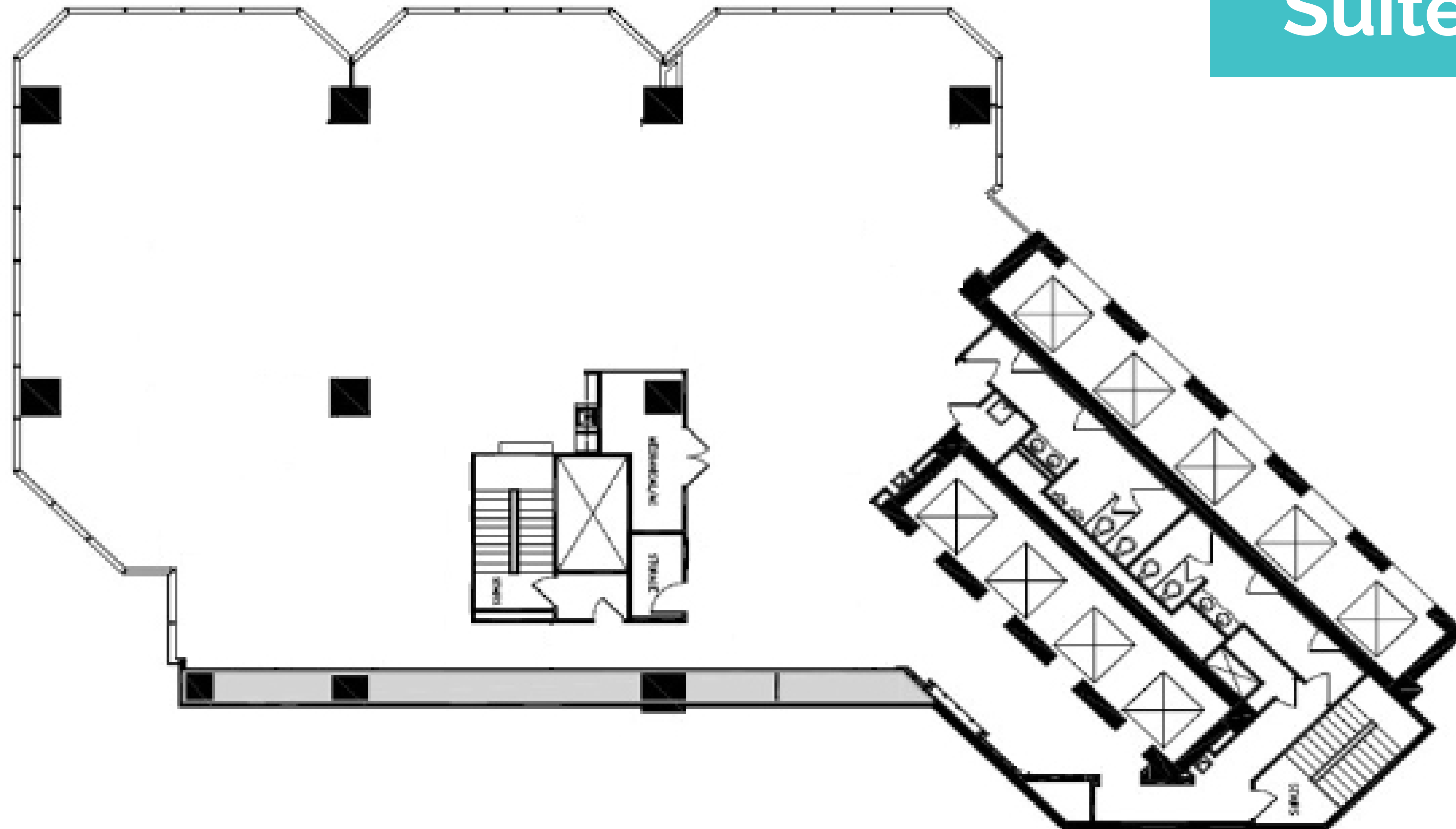
CBRE

1221 BRICKELL

FOR LEASE

Brickell Avenue's most prominent office landmark.

Suite 400 7,643 r.s.f.



Leasing contacts:

ERIC GROFFMAN

+1 786 390 7497

eric.groffman@cbre.com

JOSH GIBBONS

+1 305 788 9627

joshua.gibbons@cbre.com

EMILY BRAIS

+1 305 733 4092

emily.brais@cbre.com

1221brickellave.com

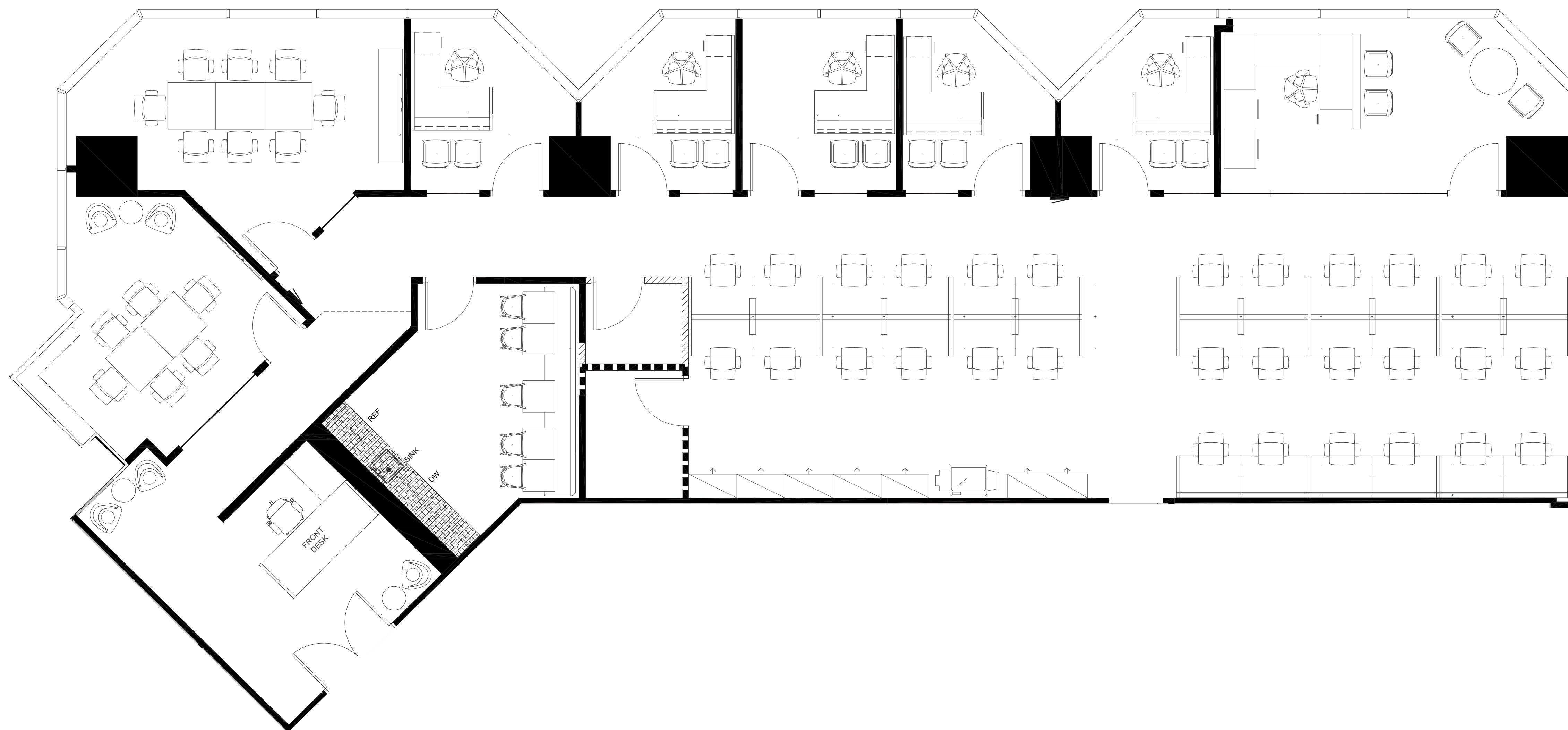
CBRE

1221 BRICKELL

FOR LEASE

Brickell Avenue's most prominent office landmark.

Suite 600 3,985 r.s.f.



Leasing contacts:

ERIC GROFFMAN

+1 786 390 7497

eric.groffman@cbre.com

JOSH GIBBONS

+1 305 788 9627

joshua.gibbons@cbre.com

EMILY BRAIS

+1 305 733 4092

emily.brais@cbre.com

1221brickellave.com

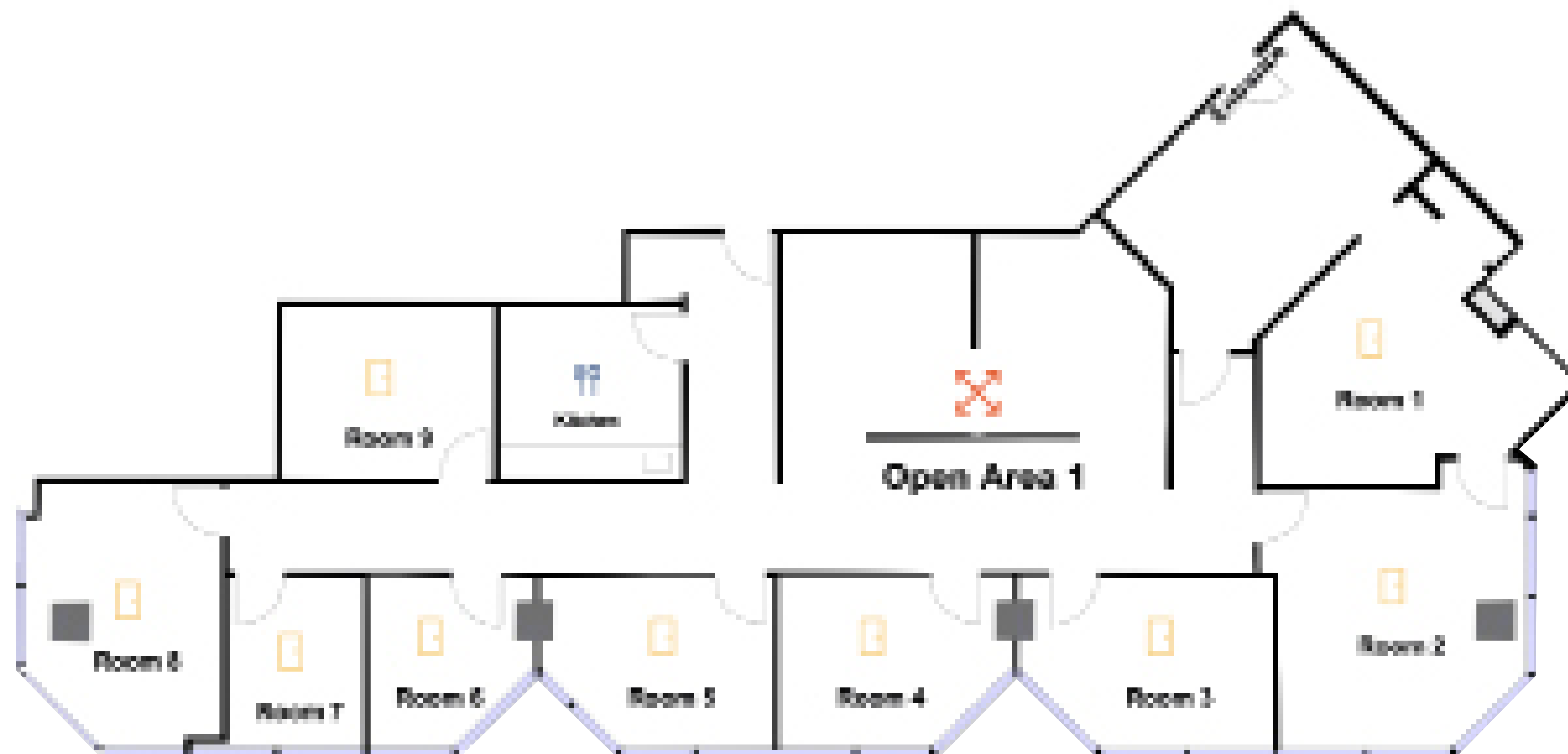
CBRE

1221 BRICKELL

FOR LEASE

Brickell Avenue's most prominent office landmark.

Suite 730 3,650 r.s.f.



Leasing contacts:

ERIC GROFFMAN

+1 786 390 7497

eric.groffman@cbre.com

JOSH GIBBONS

+1 305 788 9627

joshua.gibbons@cbre.com

EMILY BRAIS

+1 305 733 4092

emily.brais@cbre.com

1221brickellave.com

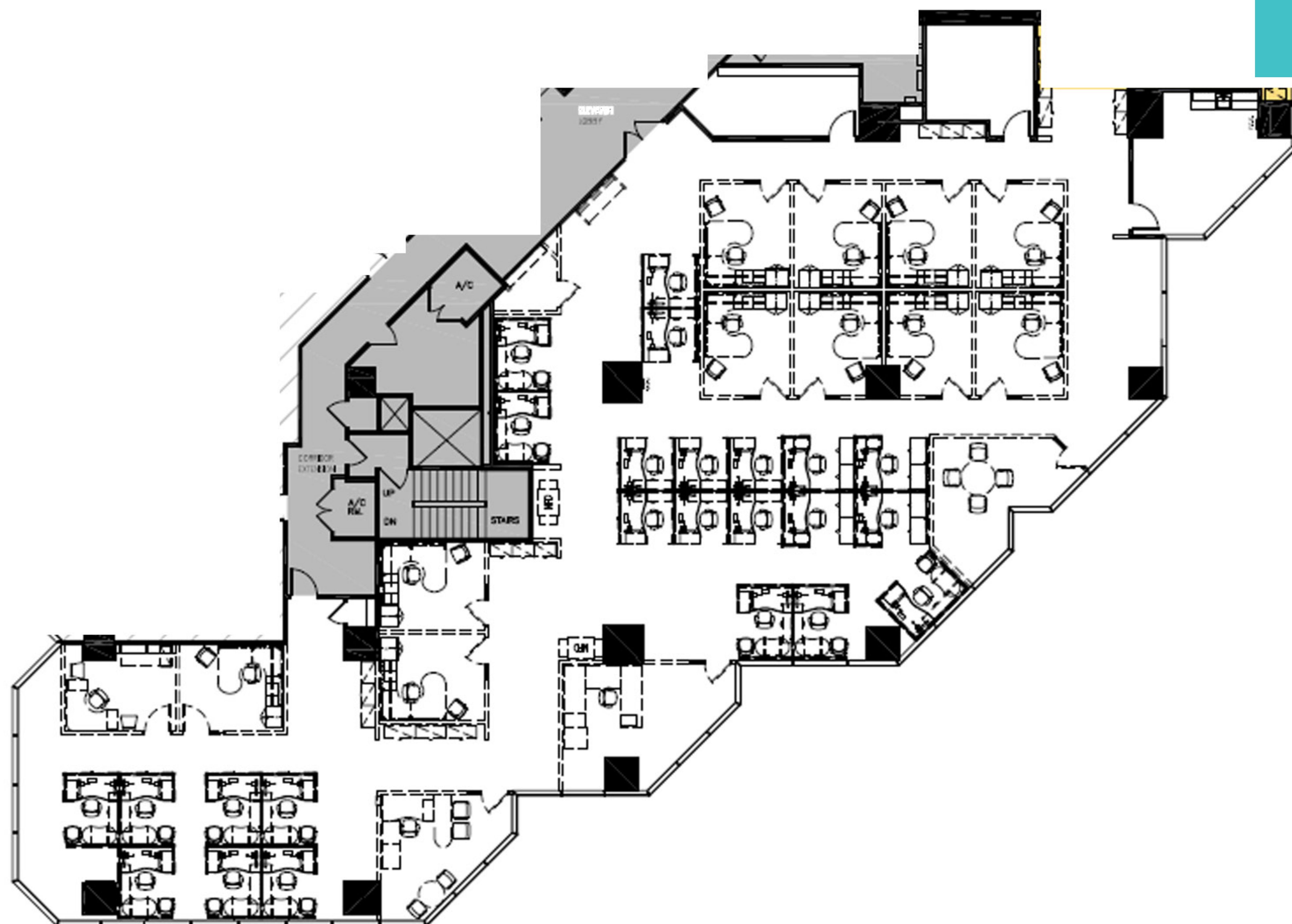
CBRE

1221 BRICKELL

FOR LEASE

Brickell Avenue's most prominent office landmark.

Suite 820 5,854 r.s.f.



Leasing contacts:

ERIC GROFFMAN

+1 786 390 7497

eric.groffman@cbre.com

JOSH GIBBONS

+1 305 788 9627

joshua.gibbons@cbre.com

EMILY BRAIS

+1 305 733 4092

emily.brais@cbre.com

1221brickellave.com

CBRE

1221 BRICKELL

FOR LEASE

Brickell Avenue's most prominent office landmark.

Suite 1050 5,720 r.s.f.



Leasing contacts:

ERIC GROFFMAN

+1 786 390 7497

eric.groffman@cbre.com

JOSH GIBBONS

+1 305 788 9627

joshua.gibbons@cbre.com

EMILY BRAIS

+1 305 733 4092

emily.brais@cbre.com

1221brickellave.com

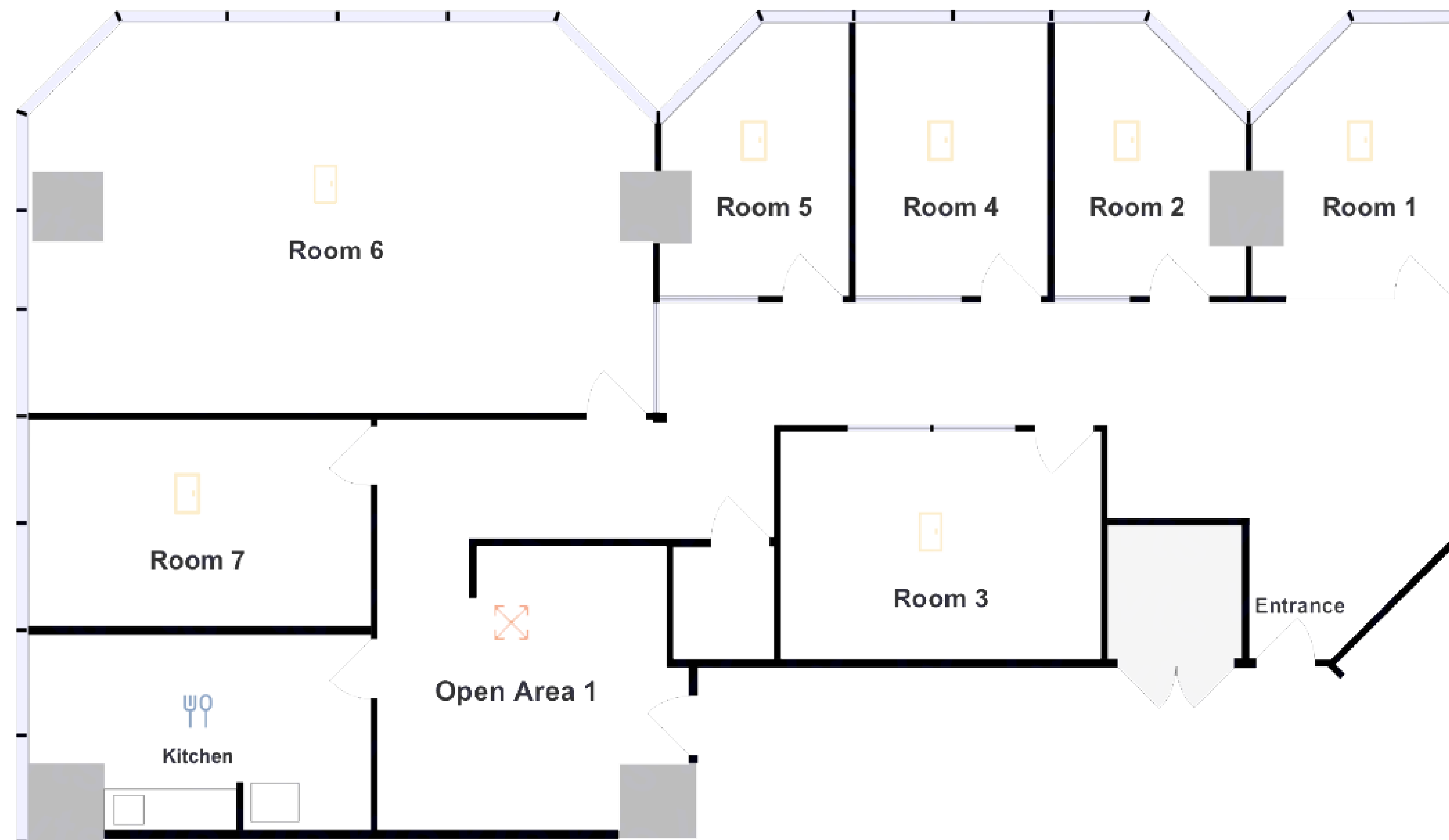
CBRE

1221 BRICKELL

FOR LEASE

Brickell Avenue's most prominent office landmark.

Suite 1070 3,258 r.s.f.



Leasing contacts:

ERIC GROFFMAN

+1 786 390 7497

eric.groffman@cbre.com

JOSH GIBBONS

+1 305 788 9627

joshua.gibbons@cbre.com

EMILY BRAIS

+1 305 733 4092

emily.brais@cbre.com

1221brickellave.com

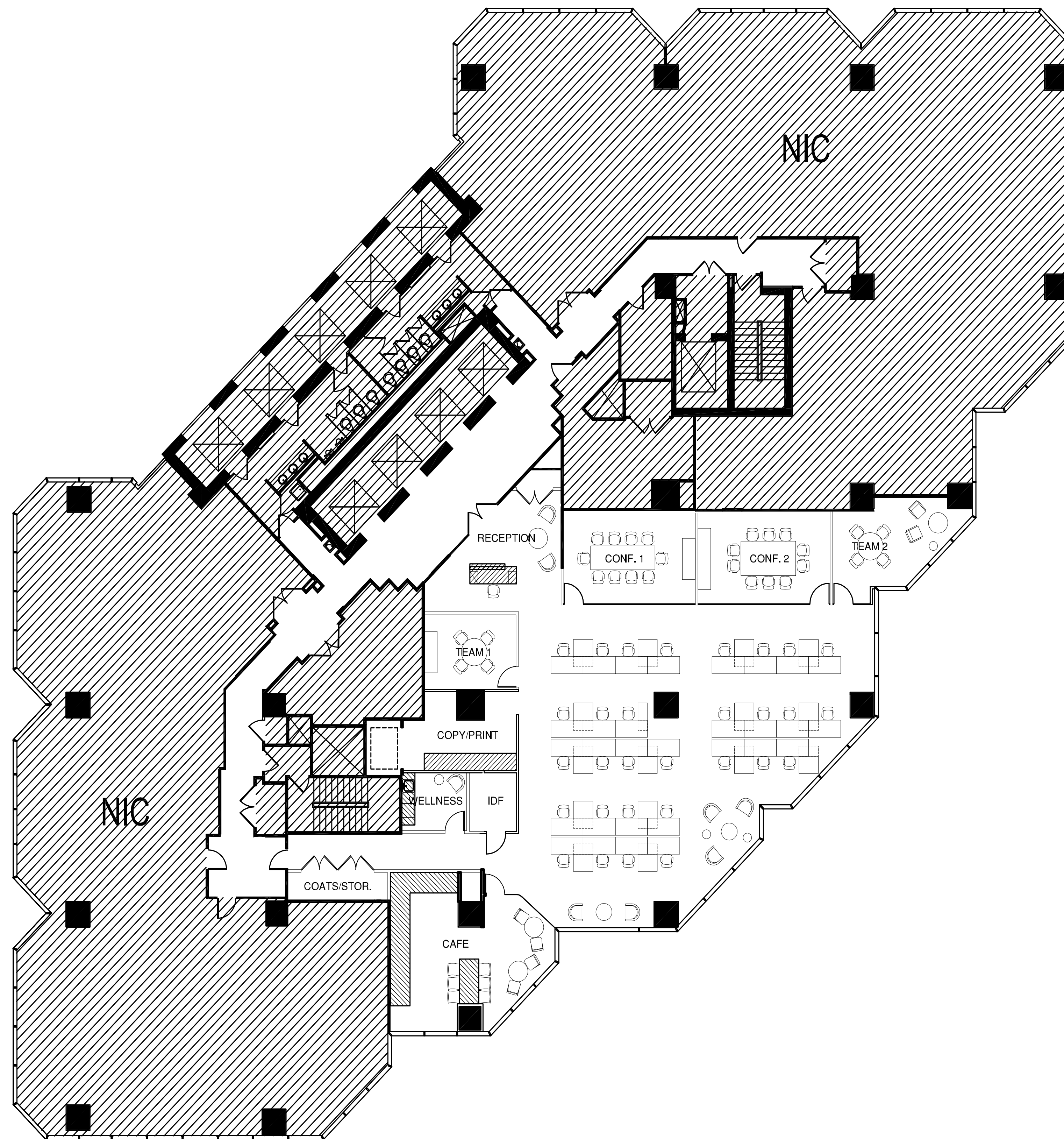
CBRE

1221 BRICKELL

FOR LEASE

Brickell Avenue's most prominent office landmark.

Suite 1170 6,069 r.s.f.



Leasing contacts:

ERIC GROFFMAN

+1 786 390 7497

eric.groffman@cbre.com

JOSH GIBBONS

+1 305 788 9627

joshua.gibbons@cbre.com

EMILY BRAIS

+1 305 733 4092

emily.brais@cbre.com

1221brickellave.com

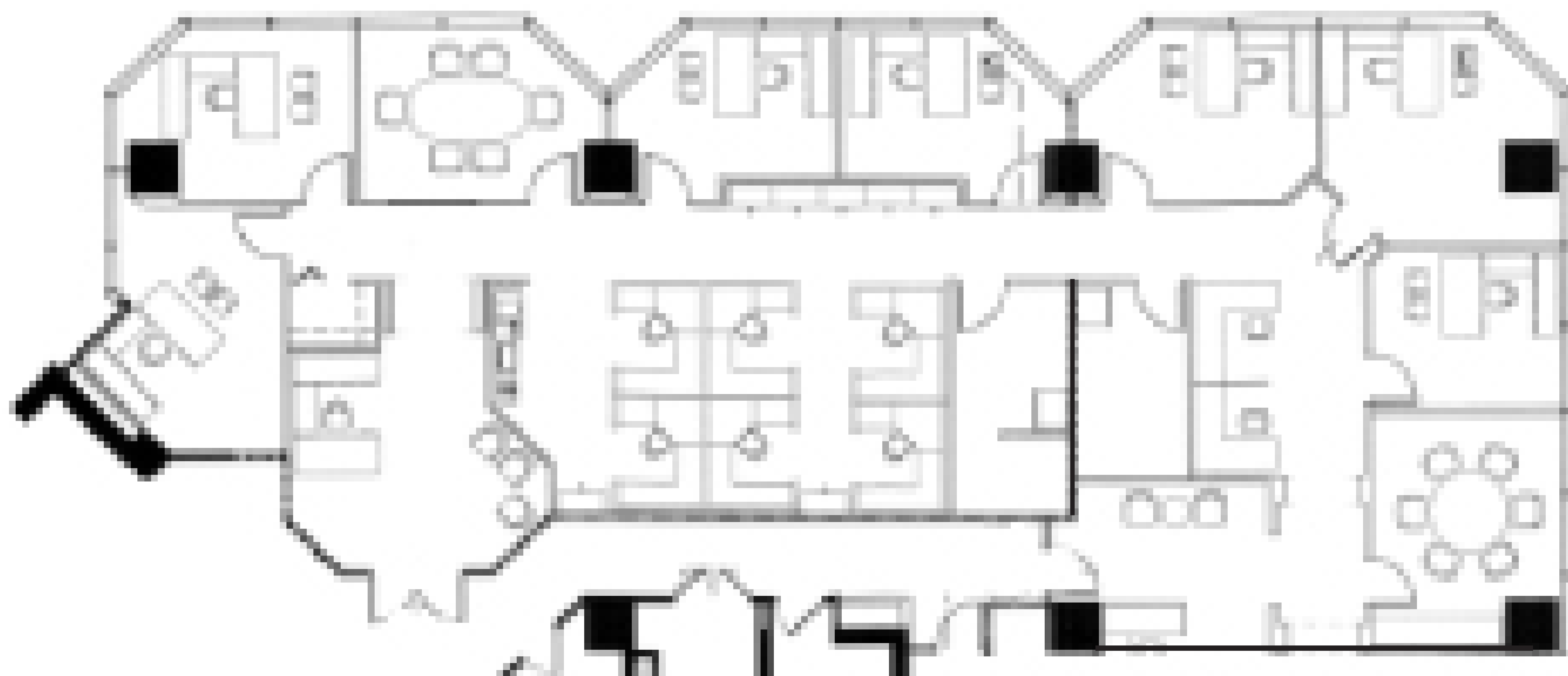
CBRE

1221 BRICKELL

FOR LEASE

Brickell Avenue's most prominent office landmark.

Suite 1210 4,205 r.s.f.



Leasing contacts:

ERIC GROFFMAN

+1 786 390 7497

eric.groffman@cbre.com

JOSH GIBBONS

+1 305 788 9627

joshua.gibbons@cbre.com

EMILY BRAIS

+1 305 733 4092

emily.brais@cbre.com

1221brickellave.com

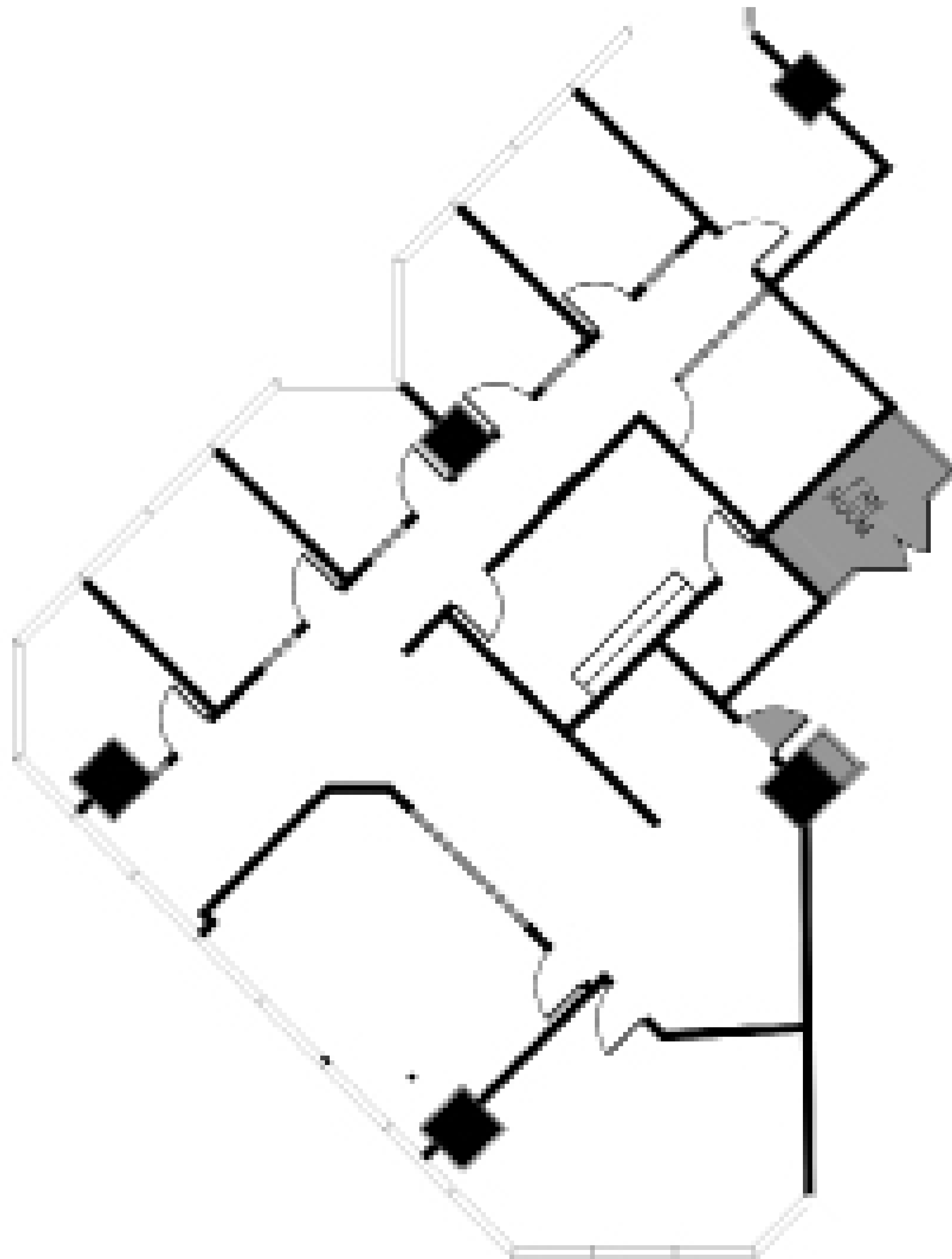
CBRE

1221 B R I C K E L L

FOR LEASE

Brickell Avenue's most prominent office landmark.

Suite 1470 3,166 r.s.f.



Leasing contacts:

ERIC GROFFMAN

+1 786 390 7497

eric.groffman@cbre.com

JOSH GIBBONS

+1 305 788 9627

joshua.gibbons@cbre.com

EMILY BRAIS

+1 305 733 4092

emily.brais@cbre.com

1221brickellave.com

CBRE

1221 BRICKELL

FOR LEASE

Brickell Avenue's most prominent office landmark.

Suite 1590 3,964 r.s.f.



Leasing contacts:

ERIC GROFFMAN

+1 786 390 7497

eric.groffman@cbre.com

JOSH GIBBONS

+1 305 788 9627

joshua.gibbons@cbre.com

EMILY BRAIS

+1 305 733 4092

emily.brais@cbre.com

1221brickellave.com

CBRE

1221 BRICKELL

FOR LEASE

Brickell Avenue's most prominent office landmark.

Suite 1660 4,448 r.s.f.

Leasing contacts:

ERIC GROFFMAN

+1 786 390 7497

eric.groffman@cbre.com

JOSH GIBBONS

+1 305 788 9627

joshua.gibbons@cbre.com

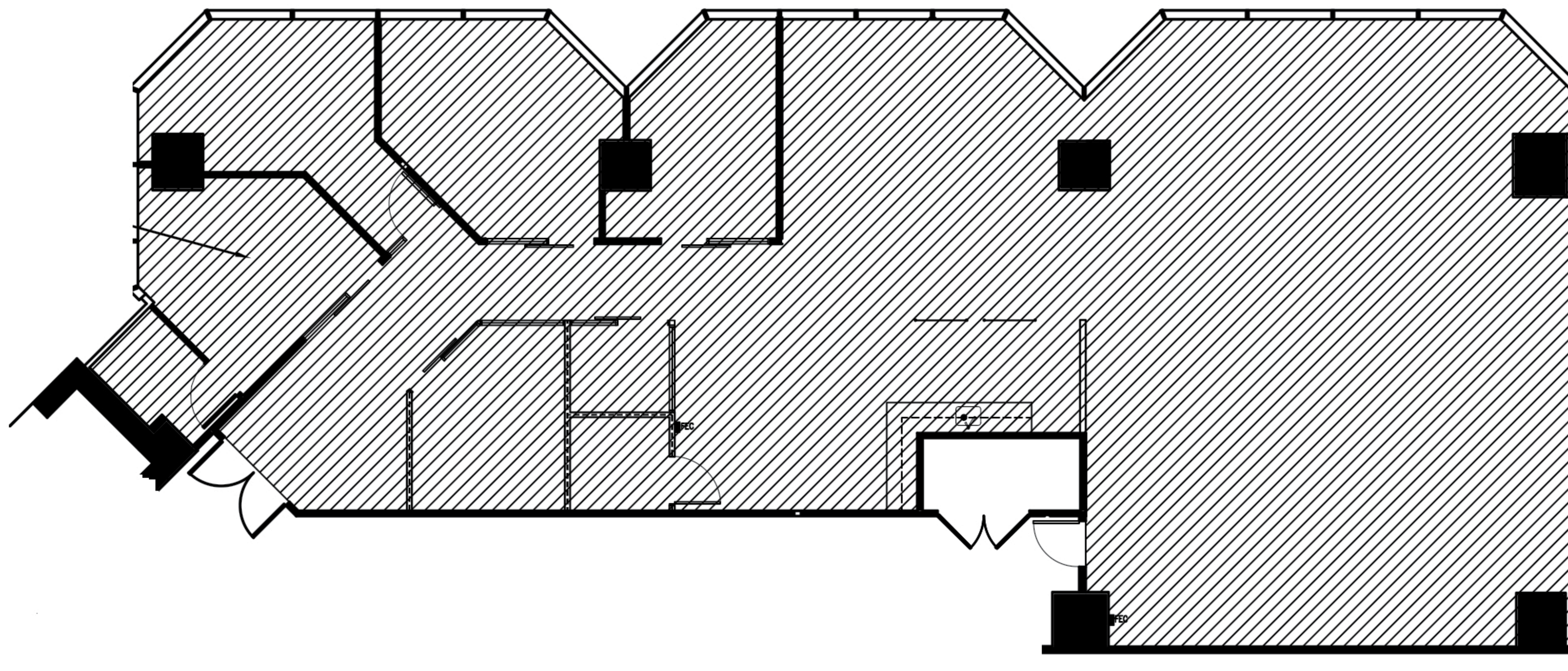
EMILY BRAIS

+1 305 733 4092

emily.brais@cbre.com

1221brickellave.com

CBRE



1221 BRICKELL

FOR LEASE

Brickell Avenue's most prominent office landmark.

Suite 1720 5,493 r.s.f.

Leasing contacts:

ERIC GROFFMAN

+1 786 390 7497

eric.groffman@cbre.com

JOSH GIBBONS

+1 305 788 9627

joshua.gibbons@cbre.com

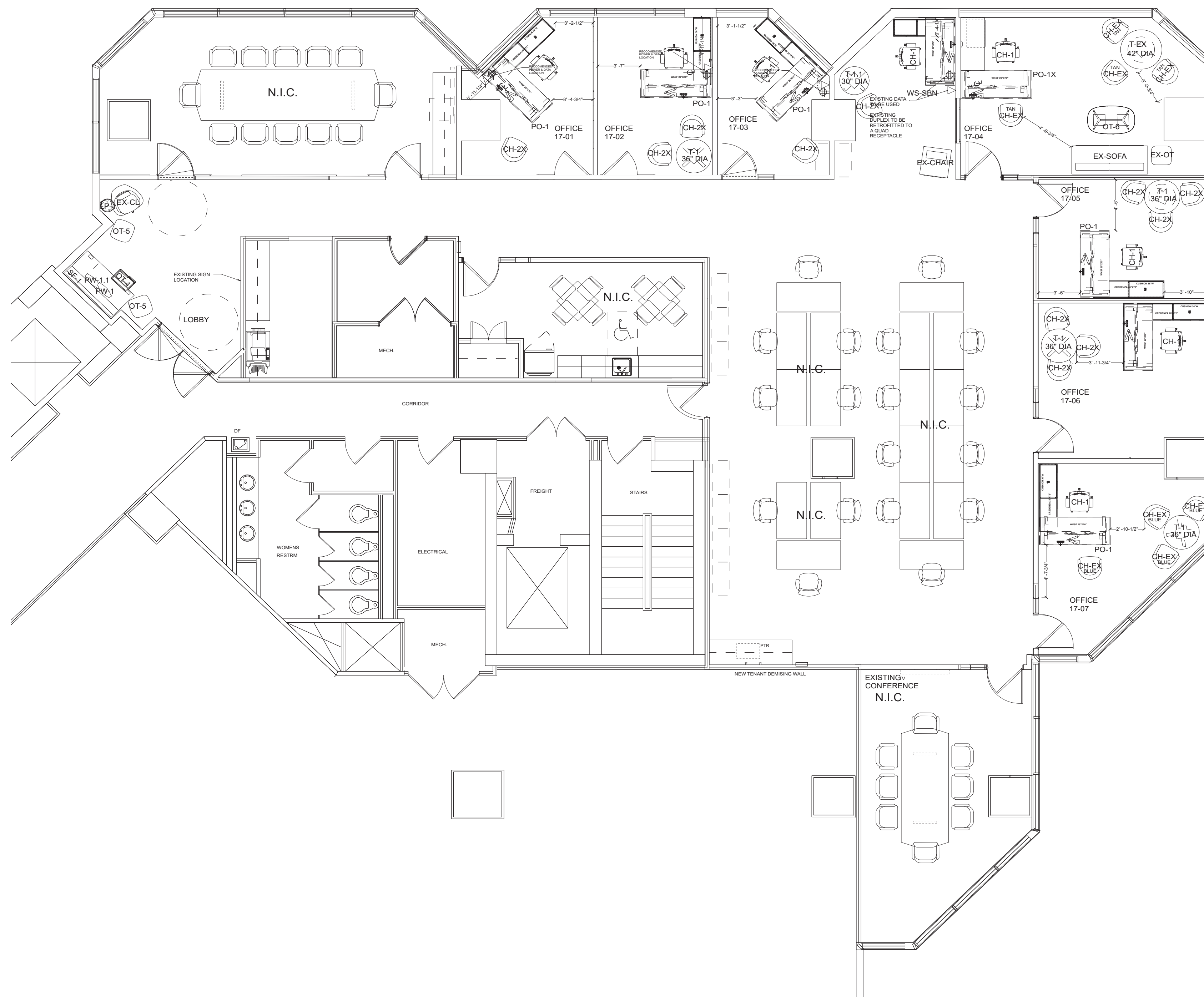
EMILY BRAIS

+1 305 733 4092

emily.brais@cbre.com

1221brickellave.com

CBRE

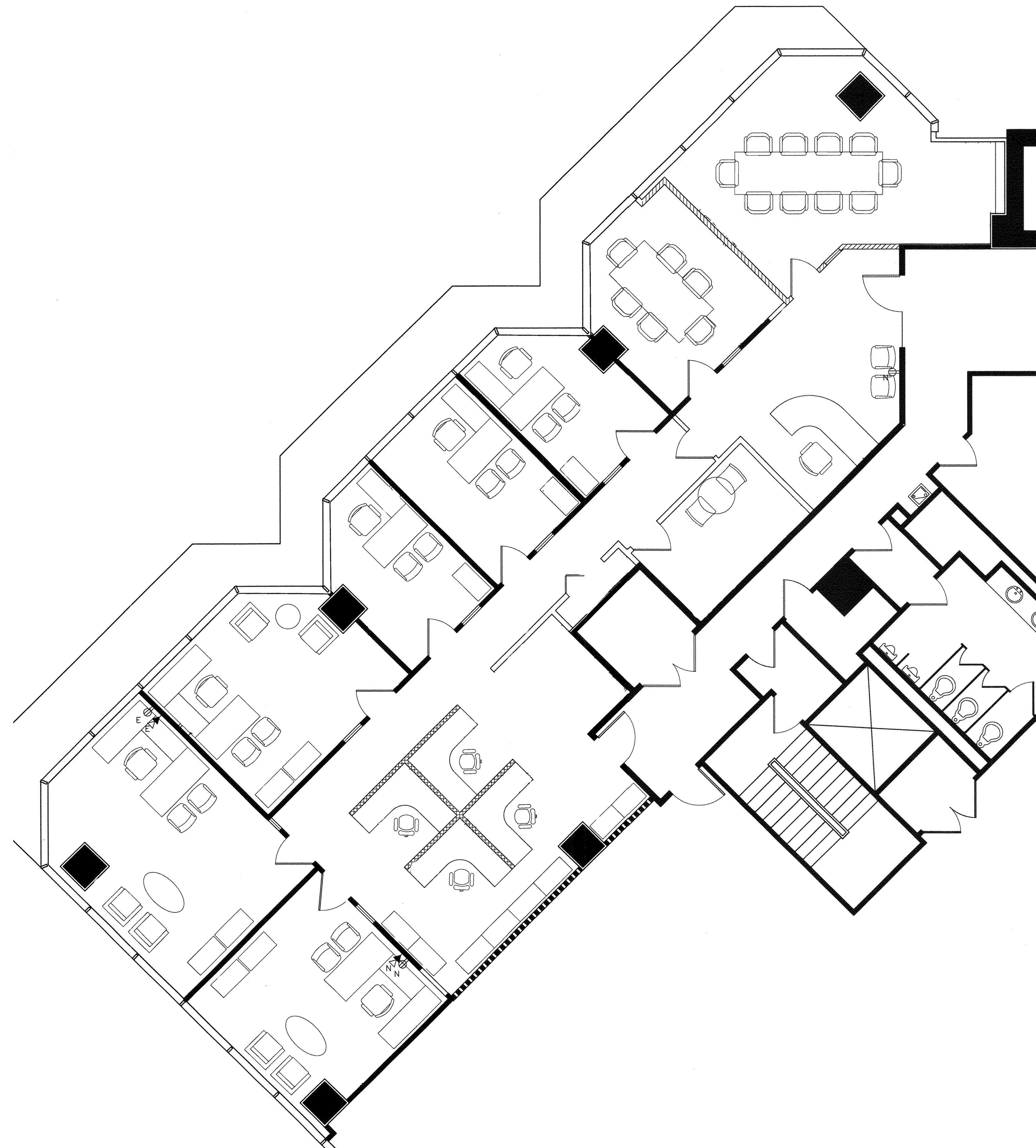


1221 BRICKELL

FOR LEASE

Brickell Avenue's most prominent office landmark.

Suite 2400 3,573 r.s.f.



Leasing contacts:

ERIC GROFFMAN

+1 786 390 7497

eric.groffman@cbre.com

JOSH GIBBONS

+1 305 788 9627

joshua.gibbons@cbre.com

EMILY BRAIS

+1 305 733 4092

emily.brais@cbre.com

1221brickellave.com

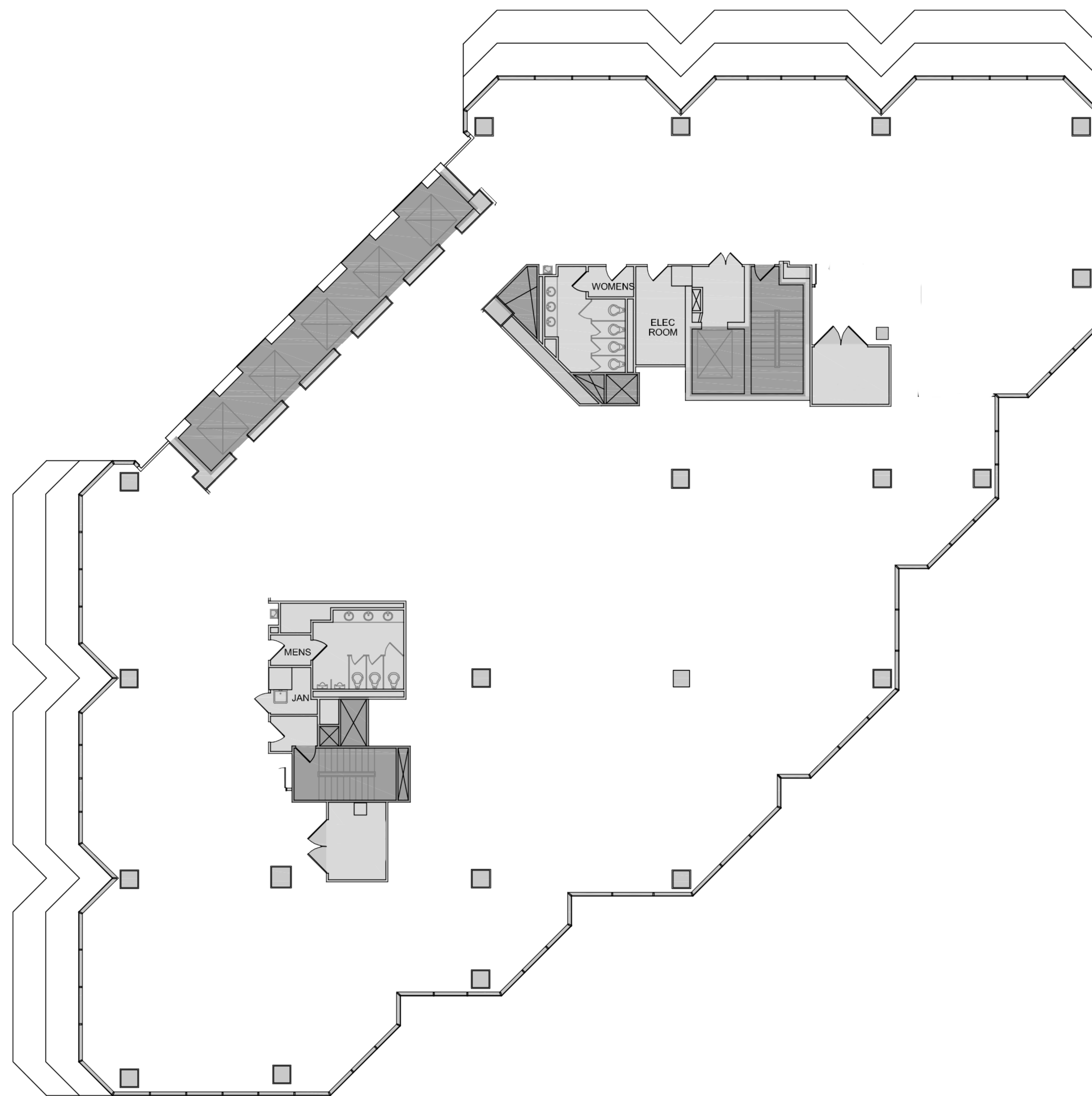
CBRE

1221 BRICKELL

FOR LEASE

Brickell Avenue's most prominent office landmark.

25th Floor 16,057 r.s.f.



Leasing contacts:

ERIC GROFFMAN

+1 786 390 7497

eric.groffman@cbre.com

JOSH GIBBONS

+1 305 788 9627

joshua.gibbons@cbre.com

EMILY BRAIS

+1 305 733 4092

emily.brais@cbre.com

1221brickellave.com

CBRE